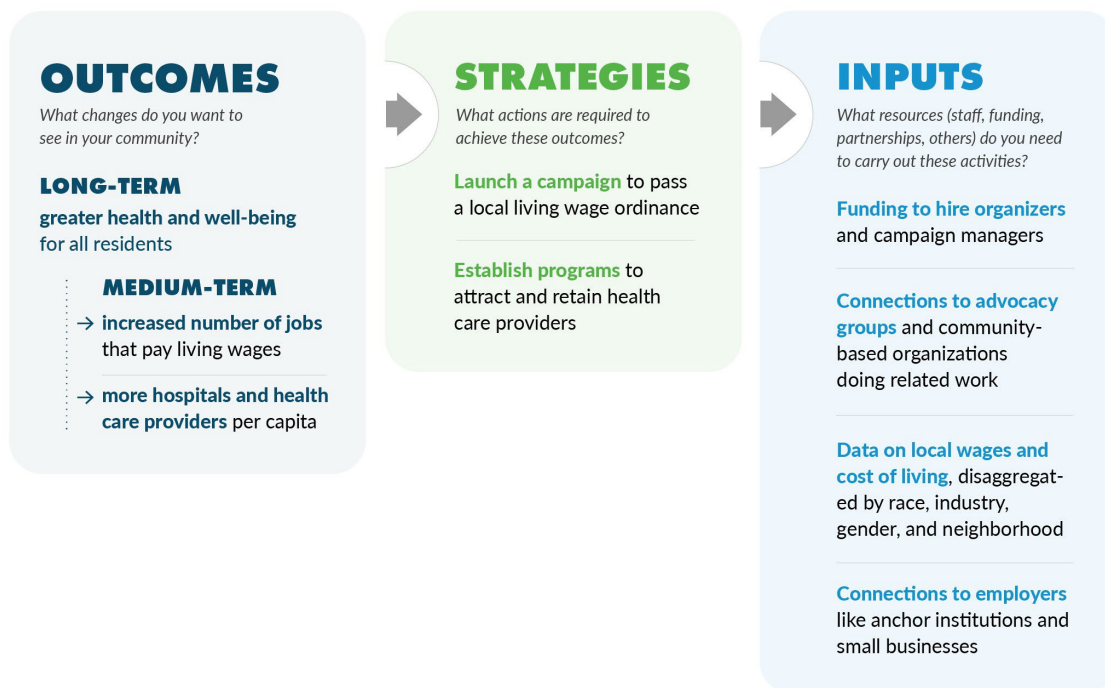


TOOLKIT FOR INCREASING UPWARD MOBILITY IN YOUR COMMUNITY

Creating a Logic Model to Achieve Your Community's Vision

This worksheet is part of the Upward Mobility Initiative's *Toolkit for Increasing Upward Mobility in Your Community*. Use it to develop a logic model that can help you achieve the goals in your community vision statement.

FIGURE 1
Example Logic Model



Write out the **community vision statement** that you cocreated with your coalition as a reminder of what you are working toward.

Identify your desired outcomes based on your vision statement—what changes do you want to see in your community?

Identify the strategies or activities your coalition will need to undertake to achieve those outcomes. See our worksheet on “**Selecting Strategic Actions for Your Logic Model**” for additional guidance.

List the inputs or resources (for example, staff, funding, partnerships, or others) you need to carry out these activities.